

## UPSC EPFO APFC 2002 QUESTION PAPER PDF

If you find an error in any one of the underlined parts (a, b, c), indicate your response by blackening the letter related to that part in the Answer Sheet provided. If a sentence has no error, indicate this by blackening (d) which stands for "No error".

- ii. Errors may belong to grammar, usage or idiom. Examples P and Q have been solved for you

- P. (a) My friend and myself  
(b) Study together  
(c) During holidays  
(d) No error

- Q. (a) The rice from Dehradun is  
(b) More superior  
(c) To that of Saharanpur  
(d) No error

**Explanation:** The correct answer for P is letter 'd' because the sentence has no mistake in it. The correct answer for Q is 'b' because the mistake in the sentence is in the part carrying the letter 'b'.  
Mrupal.org

- Q1. (a) Choose only  
(b) Such friends  
(c) That you can trust  
(d) No error

- Q2. (a) While he was digging sand  
(b) a large mass fell  
(c) and buried him completely  
(d) No error

- Q3. (a) The book is well printed and attractively bound  
(b) making together  
(c) an attractive volume  
(d) No error

- Q4. (a) A little younger  
(b) to myself we, both were  
(c) devoted to cricket and boating  
(d) No error

- Q5. (a) He had no sooner  
(b) arrived than

### PART- A

#### **SPOTTING ERRORS**

**Directions (for the next Five items) :**

- i. In this section a number of sentences are given. Each sentence has three underlined parts, indicated by (a), (b) and (c). Read each sentence to find out whether there is an error.

(c) he was asked to leave again(d) No error**Directions (for the next three items):**

Select the most suitable word from (a), (b), (c) and (d) given below each sentence to fill in the blanks

**Q6. The Rajputs always fought \_\_\_\_\_ the last man.**

- (a) upto (b) till  
(c) to (d) for

**Q7. I have been surfing internet. \_\_\_\_\_ the last two hours.**

- (a) since (b) for  
(c) from (d) right from

**Q8. You should be considerate \_\_\_\_\_ your employees and I assure you of your success in every walk of life.**

- (a) for (b) to  
(c) upon (d) on

**Directions (for the Five items which follow):**

Match words in List I with the words/group of words in the List-II such that they convey the same meaning or sense. Select the correct answer using the codes given below the lists

**Q9. List-I**

- A. Obsequious  
B. Obstreperous  
C. Inveterate  
D. Impecunious

**List-II**

1. Dishonest  
2. Having little or no money  
3. Too willing to obey  
4. Noisy and unruly  
5. Deep-rooted  
6. Fearless

Code:

- | A     | B | C | D |
|-------|---|---|---|
| (a) 3 | 4 | 5 | 2 |
| (b) 2 | 6 | 5 | 3 |
| (c) 3 | 6 | 1 | 2 |
| (d) 2 | 4 | 1 | 3 |

**Q10. List-I**

- A. Cadaverous  
B. Prodigal  
C. Decadence  
D. Gratuitous

**List-II**

1. Falling to lower moral level  
2. Jubilation  
3. Something done or given unnecessarily  
4. Looking very pale  
5. Stout or well-built  
6. Extravagant

Code:

- |       | A | B | C | D |
|-------|---|---|---|---|
| (a) 4 | 5 | 1 | 6 |   |
| (b) 1 | 6 | 2 | 3 |   |
| (c) 4 | 6 | 1 | 3 |   |
| (d) 1 | 5 | 2 | 6 |   |

**Q11. List-I**

- A. Dilettante  
B. Profligate  
C. Prescient  
D. Parochial

**List-II**

1. A person with futuristic vision  
2. Miserly  
3. A person who studies or does something without serious interest or understanding  
4. To show narrow interest  
5. Wasteful  
6. Pungent remarks

Code:

- | A     | B | C | D |
|-------|---|---|---|
| (a) 6 | 4 | 2 | 3 |
| (b) 3 | 5 | 1 | 4 |
| (c) 6 | 5 | 2 | 4 |
| (d) 3 | 4 | 1 | 5 |

**Q12. List-I**

- A. Iconoclast  
B. Humdinger  
C. Martinet  
D. Callow

**List-II**

1. Immature and inexperienced

2. Person who attacks established customs
3. Excellent person or thing
4. Popular leader
5. Mysterious plot
6. Person who imposes strict discipline

Code:

A	B	C	D
(a) 6	3	4	1
(b) 2	5	6	3
(c) 6	5	4	3
(d) 2	3	6	1

**Q13. List-I**

- A. Adjunct
- B. Contiguous
- C. Consanguine
- D. Recluse

**List-II**

1. Same family relationship
2. Diametrically opposite places
3. A person who has withdrawn from society
4. Enthusiastic person
5. Thing that is less important and not essential
6. Neighbouring

Code:

A	B	C	D
(a) 5	1	2	3
(b) 4	6	1	5
(c) 5	6	1	3
(d) 4	1	2	5

**Directions (for the Five items which follow):** Each of the following five items carries a phrase/idiom. Select the correct answer out of the four given choices (a), (b), (c) or (d) which conveys the closest meaning of the given phrase/idiom.

**Q14. The world is one's oyster**

- (a) One feels that nobody in the world would help him/her.
- (b) The feeling one gets when he lands in an unfamiliar country.
- (c) One is able to enjoy all the pleasures and opportunities that life has to offer.
- (d) When one has an uphill task to perform

**Q15. To go for the jugular?**

- (a) To work very hard for the success.
- (b) To make a fierce destructive attack on the weakest point in an opponent's argument.
- (c) To go in for the costliest thing.
- (d) To go in for dishonest means.

**Q16. To follow the primrose path**

- (a) To follow one's objectives very steadfastly.
- (b) To go on wandering.
- (c) To trek to the mountains.
- (d) To go in for pursuit of pleasure or an easy life.

**Q17. A bee in one's bonnet**

- (a) To be very enterprising
- (b) To be very timid and shy
- (c) To have an impractical idea
- (d) To have a particular idea which occupies one's thoughts continually

**Q18. To take a rain-check**

- (a) To decline an offer but promise to accept it later.
- (b) To go through the weather report.
- (c) To proceed on sightseeing.
- (d) To take to farming as a source of livelihood.

**COMPREHENSION****Directions:**

In this section you have one short passage. After the passage you will find several questions based on the passage. First, read Passage and answer the questions based on it. Examples I and J are solved for you.

**PASSAGE**

In our approach to life, be it pragmatic or otherwise, a basic fact that confronts us squarely and unmistakably is the desire for peace, security and happiness. Different forms of life at different levels of existence make up the teeming denizens of this earth of ours. And, no matter whether they belong to the higher groups such as human beings

or to the lower groups such as animals, all beings primarily seek peace, comfort and security. Life is as dear to a mute creature as it is to a man. Even the lowliest insect strives for protection against dangers that threaten its life. Just as each one of us wants to live and not to die, so do all other creatures.

- I. The author's main point is that
- different forms of life are found on earth
  - different levels of existence are possible in nature
  - peace and security are the chief goals of all living beings
  - even the weakest creature struggles to preserve its life
- J. Which one of the following assumptions or steps is essential in developing the author's position?
- All forms of life have a single overriding goal
  - The will to survive of a creature is identified with a desire for peace
  - All beings are divided into higher and lower groups
  - A parallel is drawn between happiness and life, and pain and death

#### Explanation:

- I. The idea which represents the author's main point is 'peace and security are the chief goals of all living beings', which is response (c). So 'c' is the correct answer.
- J. The best assumption underlying the passage is 'The will to survive of a creature is identified with a desire for peace', which is response (b). So 'b' is the correct answer.

#### PASSAGE

When you buy a car, examine carefully the important features of the model you are considering. Many a buyer of the latest models has got into trouble by buying a car too broad or too long for his garage. Furthermore a long car is much harder to manoeuvre in traffic and much more difficult to park. Another feature is the comfort afforded. Are the seats nice and durably upholstered? Is there enough glass area to give the driver a good view in all directions, particularly to the rear? It should be remembered that the

heavier and more powerful a car is, the more expensive it will be to operate. High powered motors require expensive high-octane petrol. The greater weight means greater tyre wear and enlarged brakes. The old cliché is still true; it is not the initial cost but the upkeep which matters!

**Q19. According to this passage, the two factors that the buyer of a new car should keep in mind are**

- its price and size
- its model and upholstery
- its size and the comfort it offers
- its upholstery and glass area

**Q20. The size of the car should be in accordance with**

- the money one can afford to pay
- the size of the garage the buyer has
- the width of the road where the buyer lives
- the volume of traffic on the road

**Q21. The writer favours a car with a wide glass area so that the driver can**

- enjoy the scene outside while driving
- have a good view of the rear
- roll down the glasspanes to get enough fresh air
- display his beautiful upholstery with pride

**Q22. It is very expensive to maintain a large car because it**

- is heavy
- requires more space for parking
- needs changing its tyres more frequently
- needs more durable upholstery

**Q23. While buying a new car, one should specially consider its**

- price
- maintenance cost
- upholstery
- brakes

**Directions (for the next Four items):**

In this section you find a number of sentences, parts of which are underlined. You may also find

only a group of words which is underlined. For each underlined part, four words/phrases are listed below. Choose the word/phrase nearest in meaning to the underlined part.

Example E is solved for you.

E. His style is quite transparent.

- (a) verbose
- (b) involved
- (c) lucid
- (d) witty

**Explanation:** In item E the word "lucid" is nearest in meaning to the word "transparent". So 'c' is the correct answer.

**Q24. I rather like the quaint little house at the end of the street.**

- (a) old
- (b) quiet
- (c) unusual
- (d) haunted

**Q25. If she continues to spend her time in such a frivolous manner, she will fail in her examinations.**

- (a) frightful
- (b) leisurely
- (c) non-serious
- (d) calculated

**Q26. Sanguine as he is in his attitude to life and its problems, he cannot but be noticed wherever he goes.**

- (a) optimistic
- (b) enthusiastic
- (c) realistic
- (d) dispassionate

**Q27. One's remonstrance against social ills has to be consistent to be fruitful.**

- (a) outrage
- (b) demonstration
- (c) protest
- (d) criticism

**Directions (for the next Three items):**

**ANTONYMS**

In this section each item consists of a word or a phrase which is underlined in the sentence given.

It is followed by four words or phrases. Select the word or phrase which is closest to the opposite in meaning of the underlined word or phrase.

Example F has been solved for you.

F. Lucy is a smart girl.

- (a) lazy
- (b) active
- (c) indecent
- (d) casual

**Explanation:** The word which is nearest to the opposite in meaning of the underlined word. "smart" is "lazy". So 'a' is the correct answer.

**Q28. The advice rendered to him sounded to be quite sagacious.**

- (a) stupid
- (b) shallow
- (c) impracticable
- (d) insincere

**Q29. The Indian cultural fair was held at Rome in a grandiose manner.**

- (a) unobtrusive
- (b) unimposing
- (c) unimpressive
- (d) simple

**Q30. His voice sounded haughty when I spoke to him over the telephone.**

- (a) pleasant
- (b) humble
- (c) soft
- (d) cheerful

**Q31. The device to convert alternating current into direct current is**

- (a) Transformer
- (b) Rectifier
- (c) Alternator
- (d) Condenser

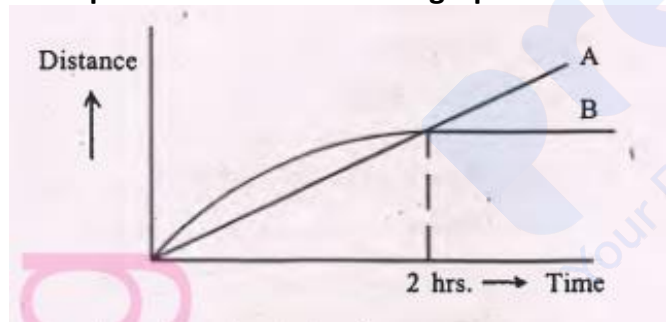
**Q32. Combustion of a candle is a**

- (a) Photochemical reaction
- (b) Exothermic reaction
- (c) Physical change
- (d) Endothermic reaction

**Q33. Which of the following is a chemical compound?**

- (a) Air
- (b) Oxygen
- (c) Ammonia
- (d) Mercury

**Q34. A and B ran over a distance starting from the same place. The distance-time graph is shown:**



**Consider the following statements:**

1. A ran throughout the given period of time with uniform velocity.
2. A ran throughout the given period of time with uniform acceleration.
3. B stopped running after 2 hours.
4. A ran faster than B near the 2-hr stage.

**Which of these statements is/are correct?**

- (a) 2 and 3
- (b) 1, 3 and 4
- (c) 4 only
- (d) 1, 2, 3 and 4

**Q35. Consider the following statements regarding the Nuclear Power Programme of India :**

1. Pressurised heavy water reactors have been set up at Kaiga (Karnataka) and Rawatbhata (Rajasthan).
2. Variable Energy Cyclotron Centre, Kolkata is one of the five Research Centres under the Department of Science and Technology.
3. India has a vast resource of Thorium and the third stage of Indian Nuclear Power Programme envisages the use of Thorium for power generation.

**Which of these statements is/are correct?**

- (a) 2 only
- (b) 1 and 2
- (c) 1 and 3
- (d) 1, 2 and 3

**Q36. Carbohydrates are stored in the body as**

- (a) Sugars
- (b) Starch
- (c) Glucose
- (d) Glycogen

**Q37. Bacteria and viruses cause**

- (a) Allergies
- (b) Non-communicable diseases
- (c) Degenerative diseases
- (d) Infectious diseases

**Q38. Substances which are obtained from micro organisms but used to destroy micro organisms are**

- (a) Antigens
- (b) Antibiotics
- (c) Antibodies
- (d) Antiseptics

**Directions:** The following Two (8 & 9) items consist of two statements, one labelled the 'Assertion (A)' and the other labelled the 'Reason (R)'. You are to examine these two statements carefully and decide if the Assertion (A) and the Reason (R) are individually true and if so, whether the Reason (R) is a correct explanation of the Assertion (A). Select



**Codes:**

- (a) Both A and R are true and R is the correct explanation of A
- (b) Both A and R are true but R is NOT the correct explanation of A
- (c) A is true but R is false
- (d) A is false but R

**Q39. Assertion (A):** A bus and a car (with lower weight than that of the bus) moving at the same velocity, are brought to rest on a level road by applying brakes which exert same retarding force. The car will travel lesser distance before coming to rest.

**Reason (R):** The kinetic energy to be destroyed is equal to the work done by the retarding force.

**Q40. Assertion (A):** A train has come out of the platform and is accelerating. If a person sitting in the train and facing engine, throws up a coin, it will fall ahead of him.

**Reason (R):** A force acts on the coin whose magnitude is equal to the product of the mass of the coin and acceleration of the train.

**Q41. Consider the following statements:**

1. Intel's Pentium IV is an operating system used in PCs.
2. During booting period of a PC, the operating system is first loaded.
3. Analogue computers are useful only in scientific field while digital computers have application in scientific as well as in business, administrative functions.
4. Micro-computer is another name for micro-processor.

Which of these statements are correct?

- (a) 1, 2, 3 and 4
- (b) 2 and 3
- (c) 1 and 4
- (d) 1, 2 and 4

**Q42. Which positional value divides the series into equal parts?**

- (a) Median
- (b) Second quartile
- (c) 5th Décile
- (d) All the above three

**Q43. A town 'P' is located in a particular district. The town 'A' is west of 'P'. Town 'T' is east of 'P'. Town 'K' is east of 'B' but west of 'T' and 'A'. They are all in the same district. Which town is the farthest west?**

- (a) P
- (b) K
- (c) B
- (d) A

**Q44. A factory has three belt conveyors fitted in its loading station. Conveyors 'A' and 'B' operating simultaneously lift all the goods in the same time during which the goods can be lifted by the conveyor 'C' operating alone. Conveyor 'B' lifts all the goods five hours faster than conveyor 'A' but four hours slower than the conveyor 'C'. The durations of time required to lift all the goods, individually by the conveyors 'A', 'B' and 'C' are**

- (a) 17, 12, 8 hrs.
- (b) 15, 10, 6 hrs.
- (c) 16, 11, 7 hrs.
- (d) 14, 9, 5 hrs.

**Q45. According to a certain code**

\* means 'greater than'

+ means 'less than'

÷ means 'equal to'

% means 'plus'

If  $A * X$ ,  $B \div Z$ ,  $Y + C$ ; then the relation. between ABC and XYZ is

- (a)  $ABC + XYZ$
- (b)  $(ABC \% XYZ) * (2XYZ)$
- (c)  $(2XYZ) * (ABC \% XYZ)$
- (d)  $(ABC/3) + (XYZ/4)$

**Q46. What is the maximum number of pieces 1 cm in diameter and 20 cm long that can be cut out of a cylindrical wooden block 20 cm in length and 3 cm in diameter?**

- (a) 4
- (b) 5
- (c) 6
- (d) 7

**Q47. A group of boys decided to buy a few cassettes whose price was between Rs.200/- and Rs.250/-. But at the time of purchase, two of the boys declined to contribute as a result of which the remaining boys had to pay Rs. 1/- more than they had originally planned. What was the price of the cassettes if the boys contributed equally and in whole number of rupees?**

- (a) Rs. 220/-
- (b) Rs. 210/-
- (c) Rs. 230/-
- (d) Rs. 240/-

**Directions (for next Five items): Sumeet, Philips, Wasim, Bishan and Chetan are five players of the College Cricket team and their home towns are Surat, Pune, Warangal, Bangalore and Chandigarh but not in that order. The five specialist slots of spinner, pace bowler, wicket-keeper, batsman and the captain are held by them, again not in the order of their names stated above.**

- (i) Their names, home towns and the specialities do not start with the same letter.
- (ii) Neither Philips nor Wasim is the captain and they do not belong to either Surat or Bangalore.
- (iii) Sumeet is neither a wicket-keeper nor a batsman.
- (iv) Pune is not Bishan's home town.

(v) The player who hails from Bangalore is a wicket-keeper

(vi) The captain's hometown is Pune while the batsman does not hail from Warangal.

**Q48. The spinner's hometown is**

- (a) Pune
- (b) Warangal
- (c) Bangalore
- (d) Chandigarh

**Q49. Chandigarh is hometown of**

- (a) Philips
- (b) Wasim
- (c) Bishan
- (d) Sumeet

**Q50. Who is the pace bowler?**

- (a) Bishan
- (b) Sumeet
- (c) Wasim
- (d) Chetan

**Q51. Who is the spinner?**

- (a) Wasim
- (b) Bishan
- (c) Chetan
- (d) Philips

**Q52. Chetan's hometown is**

- (a) Bangalore
- (b) Warangal
- (c) Surat
- (d) Pune

**Q53. A and B stand in a circular ring with 10 other persons. If the arrangement of 12**



www.prepp.in  
persons is randomly done, the chance, that there are exactly 3 persons between A and B is

- (a)  $3/12$
- (b)  $2/11$
- (c)  $2/13$
- (d)  $3/11$

**Q54. 15 men can complete a work in 280 days. They started the work and after every 10 days, 15 additional men were employed. In how many days the work was completed?**

- (a) 70 days
- (b) 60 days
- (c) 55 days
- (d) 50 days

**Q55. Bag 'A' contains 5 white and 2 black balls. Bag 'B' contains 2 white and 3 black balls. If any one bag is chosen and a ball is taken out of it at random, what is the probability that the ball is black?**

- (a)  $31/70$
- (b)  $1/2$
- (c)  $5/12$
- (d)  $3/5$

**Q56. Three containers have their volumes in the ratio 3: 4: 5. They are full of mixtures of milk and water. The mixtures contain milk and water in the ratio of 4:1, 3:1 and 5:2 respectively. The contents of all these three containers are poured into a fourth container. The ratio of milk and water in the fourth container is**

- (a) 5:2
- (b) 157: 53
- (c) 151 48

(d) 4:1

**Q57. Two dice are thrown simultaneously. The probability that the product of the two numbers on the two dice is an even number is**

- (a)  $1/2$
- (b)  $3/4$
- (c)  $5/16$
- (d)  $3/8$

**Q58. The flowers in a basket become double every minute and the basket gets full in one hour. In how much time, the basket was  $1/32$  full?**

- (a) 12 minutes
- (b) 32 minutes
- (c) 45 minutes
- (d) 55 minutes

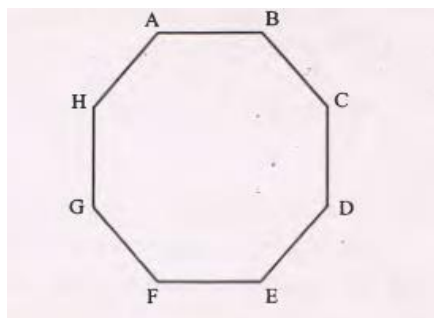
**Q59. If X is mortal, Y is wise. If Z is not good, A will suffer. Y is not wise, if A suffers. If B is a slave, X is immortal. If A suffers, what follows?**

- (a) X is mortal
- (b) B is a slave
- (c) Z is good
- (d) Y is wise

**Q60. In a group of 36 persons, a total of 16 take tea while 9 take tea but not coffee. How many persons in this group take coffee but not tea?**

- (a) 27
- (b) 20
- (c) 25
- (d) 11

**Q61. How many lines other than those shown in the figure are required to join each corner with another?**



- (a) 56
- (b) 48
- (c) 20
- (d) 32

**Q62. Two pipes 'A' and 'B' can fill a tank in 15 minutes and 20 minutes respectively. Both the pipes are opened together but after 4 minutes, pipe 'A' is turned off. What is the total time required to fill the tank?**

- (a) 12 mt 30 sec
- (b) 14 mt 40 sec
- (c) 10 mt 20 sec
- (d) 11 mt 45 sec

**Directions (For next Two items): A cube has six faces, each of a different colour. The red face is opposite to black. The green face is between red and black. The blue face is adjacent to white. The brown face is adjacent to blue. The red face is the bottom most face.**

**Q63. The four colours adjacent to green are**

- (a) red, black, blue and white
- (b) red, black, brown and blue
- (c) red, black, brown and white
- (d) red, brown, blue and white

**Q64. The face opposite to the brown face is**

- (a) red
- (b) white
- (c) green
- (d) blue

**Q65. Which of the following statements is not correct?**

- (a) The 42nd Amendment extended the term of Lok Sabha and State Legislative Assemblies from 5 years to 6 years
- (b) The President can dissolve the Lok Sabha on the advice of the Prime Minister
- (c) Money Bills cannot be introduced in the Rajya Sabha
- (d) One third members of the Rajya Sabha retire on the expiry of every third year

**Q66. Consider the following statements:**

1. For the three All-India Services, there are 24 State cadres including three joint cadres.
2. Union Public Service Commission is the cadre controlling authority for Indian Administrative Service.
3. Staff Selection Commission is entrusted with the task of making recruitment to all the Group 'B' and Group 'C' posts under the Government.

**Which of these statements is/are correct?**

- (a) 1 only
- (b) 1 and 2
- (c) 2 and 3
- (d) 1, 2 and 3

**Q67. Consider the following statements:**

1. Part 'B' of the Budget speech of the finance minister includes description of the initiatives on economic front to be taken up by the Government for the coming year in addition to direct and indirect tax proposals.
2. The receipts on account of the partial disinvestment of Central Government's holdings in the equity capital of public sector enterprises are revenue receipts.

**Which of these statements is/are correct?**

- (a) 1 only
- (b) 2 only

- (c) Both 1 and 2
- (d) Neither 1 nor 2

**Q68. The Comptroller and Auditor General of India is appointed by the**

- (a) Prime Minister
- (b) President
- (c) Finance Minister
- (d) Finance Minister

**Q69. Assertion (A):** Point of order is raised to criticize a policy of the government.

**Reason (R):** It is an important tool of legislative control.

**Codes:**

- (a) Both A and R are true and R is the correct explanation of A
- (b) Both A and R are true but R is NOT the correct explanation of A
- (c) A is true but R is false
- (d) A is false but R

**Q70. Who of the following is the Chairman of Planning Commission in India?**

- (a) Finance Minister of India
- (b) Prime Minister of India
- (c) President of India
- (d) Home Minister of India

**Q71. Who among the following became the President of India without having been the Vice – President?**

- (a) Shri V. V. Giri
- (b) Shri Venkataraman
- (c) Shri N. Sanjeeva Reddy
- (d) Shri Zakir Hussain

**Q72. Nalanda University flourished during the reign of which of the following rulers?**

- (a) Chandragupta Maurya
- (b) Ashoka
- (c) Kanishka
- (d) Harsha

**Q73. The foreign traveller who visited India during Vijayanagar period was?**

- (a) Megasthenes

- (b) Yuan Chwang
- (c) Fa Hien
- (d) Nicolo Conti

**Q74. Who among the following was a great protagonist of the 'Doctrine of Lapse'?**

- (a) Lord Dalhousie
- (b) Lord Minto
- (c) Lord Curzon
- (d) Lord Wellesley

**Q75. Chauri Chaura is known in the history of India's struggle for freedom because**

- (a) Gandhiji launched his first Satyagraha in India from this place
- (b) Gandhiji withdrew his Satyagraha movement when an irate mob set fire to a police station and burnt some policemen
- (c) Hundreds of freedom fighters were shot dead at this place by the police
- (d) Gandhiji sat on a hunger strike

**Q76. The 'Grand Trunk Road' connects**

- (a) Kolkata and Mumbai
- (b) Delhi and Chennai
- (c) Kolkata and Amritsar
- (d) Tirupati and Ludhiana

**Q77. The Civil Disobedience Movement of 1930 culminated in the signing of a pact in 1931 by Gandhiji and**

- (a) Lord Irwin
- (b) Lord Linlithgow
- (c) Lord Wavell
- (d) Lord Curzon

**Q78. Dhanvantari was**

- (a) a famous General of Chandragupta Maurya
- (b) a noted physician in the Court of Chandragupta Vikramaditya
- (c) a famous dramatist who lived during the time of Harsha
- (d) a musician in the Court of Ashoka

**Q79. Which leader is called the 'father' of India's social reform movement?**

- (a) Mahatma Gandhi

- (b) Raja Rammohun Roy  
(c) G.K. Gokhale  
(d) Lokmanya Tilak

**Q80. Match List-I. (Classical Dance Form) with List-II (State) and select the correct answer using the codes given below the lists:**

LIST I (Classical Dance Form)	LIST II (State)
E. Bharat Natyam	5. Odisha
F. Kathakali	6. Tamil Nadu
G. Kuchipudi	7. Manipur
	8. Andhra Pradesh
	9. Kerala

**Code:**

	A	B	C
(a)	4	3	1
(b)	2	5	4
(c)	4	5	1
(d)	2	3	4

**Q81. Consider the following statements :**

1. Bermuda situated in Western Atlantic Ocean is a United Kingdom Overseas Territory.
2. 38<sup>th</sup> Parallel divided boundary between North and South Vietnam before unification.
3. Bahamas situated near Florida is one of the states of USA.

**Which of these statements is/are correct?**

- (a) 1 only  
(b) 2 and 3  
(c) 1 and 3  
(d) 1 and 2

**Q82. Consider the following statements :**

1. Falkland Islands are situated in Pacific Ocean.
2. Red Sea separates Sudan from Egypt.
3. England, Norway, Denmark surround North Sea.

**Which of these statements is/are correct?**

- (a) 2 only  
(b) 1 and 3  
(c) 2 and 3  
(d) 3 only

**Q83. Which is the correct sequence of the given American cities from West to East?**

- (a) Salt Lake City-Pittsburgh-San Francisco-Boston

- (b) San Francisco-Salt Lake City-Pittsburgh-Boston  
(c) Salt Lake City-San Francisco-Boston-Pittsburgh  
(d) San Francisco-Pittsburgh-Salt Lake City-Boston

**Q84. Latitude of a place is indicative of its**

- (a) time  
(b) altitude  
(c) amount of rainfall  
(d) temperature

**Q85. Consider the following statements :**

1. Alluvial soil is rich in chemical properties and is capable of yielding Rabi and Kharif crops.
2. Black soil is suitable for cotton, groundnut.
3. Rabi crops are reaped in autumn after sowing in June.

**Which of these statements are correct?**

- (a) 1, 2 and 3  
(b) 1 and 2  
(c) 2 and 3  
(d) 1 and 3

**Q86. Consider the following statements : While it is 6:30 AM (Sunday) in London, it is around**

1. 2.30 AM (Sunday) in Honolulu (Hawaii)
2. 8.30 PM (Saturday) in Honolulu (Hawaii)
3. 3.30 PM (Sunday) in Tokyo
4. 1:30 AM (Sunday) in Tokyo

**Which of these statements is/are correct?**

- (a) 4 only  
(b) 2 and 3  
(c) 1 and 4  
(d) 2 and 4

**Q87. Consider the following statements:**

1. Prime Meridian passes through Greenwich and is at 0° Longitude.
2. International Date Line, on the map appears as a straight line along 180° Longitude.
3. While crossing International Date Line from east to west, one gains a day.
4. Tropic of Cancer lies at 23½° Latitude S.

**Which of these statements are correct?**

- (a) 1, 2, 3 and 4  
(b) 1 and 2  
(c) 1 and 3  
(d) 2 and 3

**Q88. Consider the following statements :**

**According to Census 2001**

1. The literacy rate increase for males is more than that of the females during last one decade.
2. Amongst the States and Union Territories, Delhi has the highest population density while Sikkim has the lowest.
3. The correct sequence of population in descending order of Rajasthan, Madhya Pradesh, Tamil Nadu and Karnataka is Tamil Nadu-Madhya Pradesh-Rajasthan-Karnataka.

**Which of these statements is/are correct?**

- (a) 1 and 2
- (b) 2 and 3
- (c) 1, 2 and 3
- (d) 3 only

**Q89. Match List-I (Park/Sanctuary) with List-II (State) and select the correct answer using the codes given below the lists:**

List-I (Park/Sanctuary)	List-II (State)
A. Keoladeo National Park	1. Assam
B. Corbett National Park	2. Kerala
C. Kaziranga Sanctuary	3. Uttar Pradesh
D. Periyar Sanctuary	4. Rajasthan
	5. Uttaranchal

**Code:**

- |       |   |   |   |
|-------|---|---|---|
| A     | B | C | D |
| (a) 2 | 5 | 4 | 1 |
| (b) 4 | 3 | 1 | 2 |
| (c) 2 | 3 | 4 | 1 |
| (d) 4 | 5 | 1 | 2 |

**Q90. Match List-I (Multi-purpose river valley projects) with List-II (State) and select the correct answer using the codes given below the lists:**

List-I (Multi-purpose river valley projects)	List-II (State)
A. Purna Project	1. Gujarat
B. Bhima Project	2. Maharashtra
C. Kakrapara Project	3. Uttaranchal
D. Tehri Dam Project	4. Uttar Pradesh
	5. Karnataka

**Code:**

- |       |   |   |   |
|-------|---|---|---|
| A     | B | C | D |
| (a) 1 | 2 | 5 | 3 |
| (b) 2 | 5 | 1 | 3 |
| (c) 1 | 3 | 5 | 4 |
| (d) 2 | 4 | 1 | 3 |

**Q91. Match List-I (City) with List-II (River Passing through the city) and select the correct answer using the codes given below the lists:**

List-I (City)	List-II (River passing through the city)
A. Nasik	1. Krishna
B. Surat	2. Cauvery
C. Ujjain	3. Godawari
D. Vijayawada	4. Shipra
	5. Tapti

**Code:**

- |       |   |   |   |
|-------|---|---|---|
| A     | B | C | D |
| (a) 3 | 5 | 4 | 1 |
| (b) 4 | 1 | 3 | 2 |
| (c) 3 | 1 | 4 | 2 |
| (d) 4 | 5 | 3 | 1 |

**Q92. Recently, Cannes Film Festival was held in**

- (a) Switzerland
- (b) France
- (c) Italy
- (d) England

**Q93. Shri Kiran Karnik is the**

- (a) President of NASSCOM
- (b) Chairman of the Board of Control of Cricket for India
- (c) Chairman of Maharashtra State Public Service Commission
- (d) Managing Director of Engineers India Ltd.

**Q94. Knesset is the name of the Parliament of**

- (a) Norway
- (b) Sweden
- (c) Israel
- (d) Spain

**Q95. Match List-I with List-II and select the correct answer using the code given below the lists:**

**List-I**

- A. Dennis Tito  
 B. Colin Powell  
 C. Jacques Chirac  
 D. Donald H. Rumsfeld

**List-II**

1. President of France  
 2. Defence Secretary, USA  
 3. Secretary of State, USA  
 4. First space tourist

Code:

A	B	C	D		
(a)	1	3	4	2	
(b)	4	2	1	3	
(c)	1	2	4	3	
(d)		4	3	1	2

**Q96. Match List-I (Football World Cup/Year) with List-II (Host Country) and select the correct answer using the code given below the lists:**

**List-I (Football World Cup/Year)**

- A. 1986  
 B. 1990  
 C. 1994  
 D. 1998

**List-II (Host Country)**

1. Italy  
 2. Mexico  
 3. France  
 4. USA  
 5. Spain

Code:

A	B	C	D
(a) 5	3	2	1
(b) 2	1	4	3
(c) 5	1	2	3
(d) 2	3	4	1

**Q97. Match List-I (Person) with List-II (Organization) and select the correct answer using the code given below the lists:**

**List-I (Person)**

- A. Rajendra S. Pawar  
 B. Ashok Soota  
 C. R.S. Lodha  
 D. R.K. Pachauri

**List-II (Organization)**

1. CII

2. TERI  
 3. NIIT  
 4. FICCI

Code:

A	B	C	D
(a) 4	2	3	1
(b) 3	1	4	3
(c) 4	1	3	2
(d) 3	2	4	1

**Q98. Raksha Kavach' is**

- (a) a new safety equipment designed for the soldiers of Indian Army  
 (b) an anti-collision device to prevent collision between trains designed by the Konkan Railway Corporation  
 (c) a new design for earthquake resistant buildings  
 (d) a new device for the Indian airports for the safe landing of aircrafts

**Q99. Consider the following statements in respect of Soccer World Cup :**

1. Prior to FIFA-2002 Cup, Brazil had won the World Cup four times.  
 2. Indomitable Lions' is the nickname for Cameroon team.  
 3. 'Azzurri' is the nickname for the Italian team.  
 4. Senegal, Slovenia and Ecuador participating in FIFA-2002 are the only teams participating in the World Cup for the first time.

Which of these statements are correct?

- (a) 1, 2 and 3  
 (b) 2 and 3  
 (c) 1, 3 and 4  
 (d) 1, 2 and 4

**Q100. Recently, Government disinvested stake in VSNL, IBP and IPCL to**

- (a) Bharti Telesonic, Reliance and GAIL, respectively  
 (b) Tata Group of Industries, Indian Oil Corporation and Reliance, respectively  
 (c) Bharti Telesonic, Royal Dutch Shell and Pfizer, respectively



**Q101. Stockholm Syndrome is a mental condition experienced by**

- (a) the young persons who take up jobs in the industry after passing out from the Management Schools
- (b) persons who migrate from rural areas to urban cities, during the earlier stages of their stay
- (c) drug-addicts in the rehabilitation centres
- (d) hostages and kidnap victims in which positive feelings develop towards their captors

**Q102. Match List-I (Football World Cup/Year) with List-II (Host Country) and select the correct answer using the code given below the lists:**

**List-I (Prominent Football Player)**

- A. Michael Owen
- B. Luis Figo
- C. Gabriel Batistuta
- D. Raul Gonzalez

**List-II (Country)**

- 1. Italy
- 2. Spain
- 3. Portugal
- 4. Argentina
- 5. England
- 6. Brazil

Code:

- | A     | B | C | D |
|-------|---|---|---|
| (a) 5 | 2 | 4 | 3 |
| (b) 6 | 3 | 1 | 2 |
| (c) 5 | 3 | 4 | 2 |
| (d) 6 | 2 | 1 | 3 |

**Q103. Match List-I (City) with List-II (Establishment) and select the correct answer using the codes given below the lists:**

**List-I (City)**

- A. Arkonnam
- B. Allahabad
- C. Kamptee
- D. Mhow

**List-II (Establishment)**

- 1. Central Air Command HQ
- 2. Naval Air Base
- 3. Institute of Military Law
- 4. Coast Guard District HQ
- 5. College of Combat

Code:

- | A     | B | C | D |
|-------|---|---|---|
| (a) 2 | 5 | 3 | 1 |
| (b) 3 | 1 | 4 | 5 |
| (c) 2 | 1 | 3 | 5 |
| (d) 3 | 5 | 4 | 1 |

**Q104. Match List-I (Library) with List-II (City) and select the correct answer**

**List-I (Library)**

- A. National Library
- B. State Central Library
- C. Connemara Public Library

**List-II (City)**

- 1. New Delhi
- 2. Kolkata
- 3. Mumbai
- 4. Chennai

Code:

- | A     | B | C |
|-------|---|---|
| (a) 1 | 3 | 4 |
| (b) 2 | 3 | 4 |
| (c) 1 | 4 | 3 |
| (d) 2 | 4 | 3 |

**Q105. Crop Yield Formulation Unit which has developed statistical models to forecast crop yield works under the control of**

- (a) Ministry of Water Resources
- (b) Department of Agriculture and Co operation
- (c) India Meteorological Department
- (d) Department of Food and Public Distribution

**Q106. East Timor, the latest independent nation in the world was ruled by**

- (a) Indonesia
- (b) Australia
- (c) Malaysia
- (d) Philippines

**Q107. What is the chronological sequence of the following developments?**

- National Aluminium Company Ltd. : Bhubaneswar
- Indian Bureau of Mines : Dhanbad
- National Film Archives of India : Pune
- National Archives of India : New Delhi

**Q108. Sagar Samrat' is the name of**

- an island near Port Blair
- a drilling ship in Bombay High
- an island near Maldives
- name of a 5-star hotel in Goa

**Q109. Which tourist destination from amongst the following will be developed as an international destination for tourism according to the Budget 2002-03?**

- Port Blair
- Hampi
- Pushkar
- Nalanda

**Q110. Shri Rajender Singh won the Ramon Magsaysay Award for**

- Emergent leadership
- Community leadership
- Illiteracy eradication
- Bio-technology

**Q111. Which among the following became the first woman Prime Minister in the world?**

- Indira Gandhi
- Kim Campbell
- Margaret Thatcher
- Sirimavo Bandaranaike

**Q112. Who among the following wrote the book Algebra of Infinite Justice?**

- Anita Desai
- Vikram Seth
- Arundhati Roy
- Rohinton Mistry

**Q113. Consider the following statements:**

- The demand for commodities having a small number of close substitutes is less elastic than the commodities having a smaller number of substitutes
- Luxury items have a highly elastic demand
- The commodities whose consumption cannot easily be postponed have less elastic demand

**Which of these statements is/are correct?**

- 1 only
- 2 and 3
- 1 and 2
- 1, 2 and 3

**Q114. Consider the following statements:**

- Launching of Fourth five-year plan was postponed and three annual plans had to be resorted to between 1966 to 1969.
- Fifth five-year plan was terminated a year earlier.
- Eighth five-year plan commenced in 1992 instead of 1990.

**Which of these statements is/are correct?**

- 2 and 3
- 1 and 2
- 1 and 3
- 1, 2 and 3

**Q115. Assertion (A):** Macro-economic deals with the study of aggregates and averages.

**Reason (R):** Central problem of macro-economics is the determination of income and employment

**Codes:**

- Both A and R are true and R is the correct explanation of A
- Both A and R are true but R is NOT the correct explanation of A
- A is true but R is false
- A is false but R